



Half Moon Lane, SE24 | £525,000

02087029555

hernehill@pedderproperty.com

pedder
We live local



In General

- Retirement Development
- Ground floor flat
- Spacious reception room
- Kitchen
- Shower room
- Two bedrooms
- Direct access to communal gardens
- Communal residents reception hall
- Close to transport links
- Chain Free

In Detail

****CHAIN FREE**** We are pleased to be able to offer to the market this two bedroom ground floor apartment within Dulwich Mead, a private retirement development just off Half Moon Lane SE24.

The accommodation comprises a bright reception room with double doors & windows to rear and a window to side, kitchen with a range of wall & base units and integrated oven & hob. The principal double bedroom has a window overlooking the communal gardens and the second bedroom is also a double. There is a practical shower room, and there are two storage cupboards within the hallway.

An Estate Manager oversees the development and can offer assistance when required.

Dulwich Mead is set in extensive communal grounds, there are mature trees and well established shrub & flower beds, and there are residents & visitors parking bays (on a first come served basis). Within the development a guest room can be rented for short term visitors, there is a large communal lounge which is used for various events and a kitchenette for refreshments.

Herne Hill centre offers a popular range of restaurant and shopping amenities, railway station (Victoria, Thameslink, Blackfriars) and access to the vast expanse of Brockwell Park with its lido & cafe. Various bus routes traverse nearby roads.

EPC: D | Council Tax Band: D | Lease: 87 years remaining | SC: £5,346 pa | GR: Nil | BI: Included in Service Charge



Floorplan

Dulwich Mead, SE24

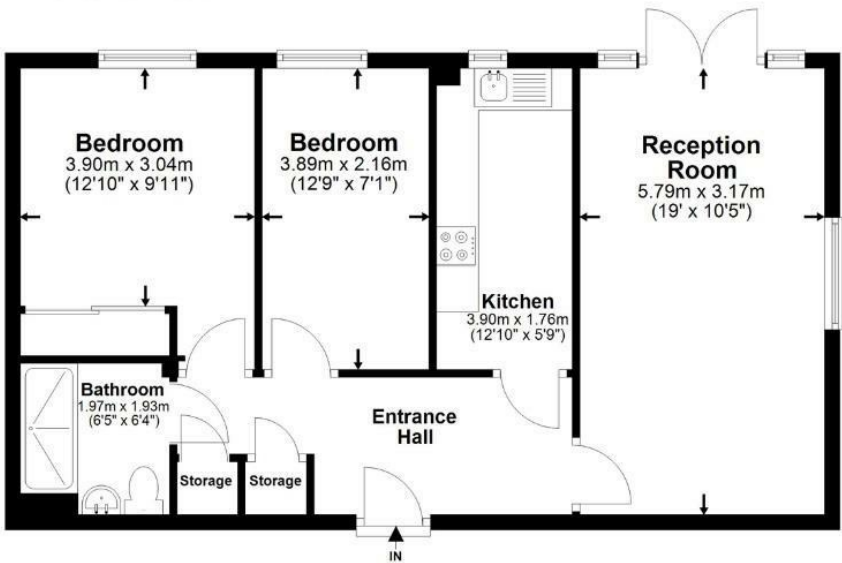
Total* = 60.3 sq m / 648.9 sq ft

Ground Floor = 60.3 sq m / 648.9 sq ft

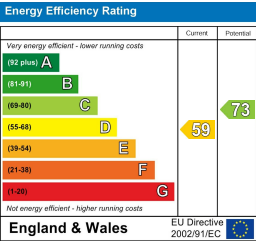
[] = Reduced head room below 1.5m



Ground Floor



*All measurements are approximate and do not include eaves space. The plans are for representation purposes only as defined by RICS - 'Code of Measurement Practice'. The plans are not to scale. Please personally check all sizes, dimensions, shapes and compass bearings before making any decisions reliant upon them. Copyright The Pedder Group © 2026.



Pedder Property Ltd trading as Pedder for themselves and for the vendor/landlord of this property whose agents they are, give notice that (1) these particulars do not constitute any part of an offer or contract, (2) all statements contained within these particulars are made without responsibility on the part of Pedder or the vendor/landlord, (3) whilst made in good faith, none of the statements contained within these particulars are to be relied upon as a statement of representation or fact, (4) any intending purchaser/tenant must satisfy him/herself by inspection or otherwise as to the correctness of each of the statements contained within these particulars, (5) the vendor/landlord does not make or give either Pedder or any person in their employment any authority to make or give representation or warranty whatsoever in relation to this property.